

FasTrade Multi-exchange Trading Application Front End Software Installation Procedure

(New 64 bit Version)

for CSE Members & Clients



Documented by:

Samik Bhaduri

Asst. Manager – ITD

The Calcutta Stock Exchange Limited

Market Place Technologies (a BSE Enterprise) released its new version of the Fastrade front end in August 2011.

To install the new version please follow the instructions:

As Fastrade New Version requires Dot Net 4.0 as a prerequisite, this new version of Fastrade will not run in Windows 2000 Professional. It will run on Windows XP Professional with Service Pack 3 (Service pack 2 with latest updates will also work).

The new version should work in Windows 7 Professional edition but it is not tested and optimized by Marketplace Technologies yet.

If XP Service pack 3 is not installed in your PC, then you can download it from Microsoft's website or CSE ftp site at 130.10.20.1.

Step 1:

The new version requires Microsoft Dot Net version 4.0 as a prerequisite. So download the Dot Net 4.0 from Microsoft website or from our ftp site at [Ftp://130.10.20.1](ftp://130.10.20.1) with its credentials as:

User: cseftpuser
Password: cseftp321
Download \Dot Net Installers\dotNetFx40_Full_x86_x64.exe

Download Win XP Service Pack 3 (if required)
\Win XP Service Pack 3\WindowsXP-KB936929-SP3-x86-ENU.exe
Run it and restart the computer once before installing other software.

Step 2:

Download \Fastrade 64bit New Version Setup.zip
Extract the zip file into the desktop. It will create a directory as 'Fastrade 64bit New Version Setup'.

Step 3:

Run the downloaded exe to install the dot net and then restart the computer.

Step 4:

After restarting the computer, go to the 'Fastrade 64bit New Version Setup' directory at the desktop and run the FasTradePlusx86.exe to install the new release of Fastrade Software:

Chose the 'Install for everyone' option.

Once it is successfully installed, an icon will be created on the desktop as a shortcut for 'FastradePlus'.

Double click on that icon and it will ask for the configuration files.

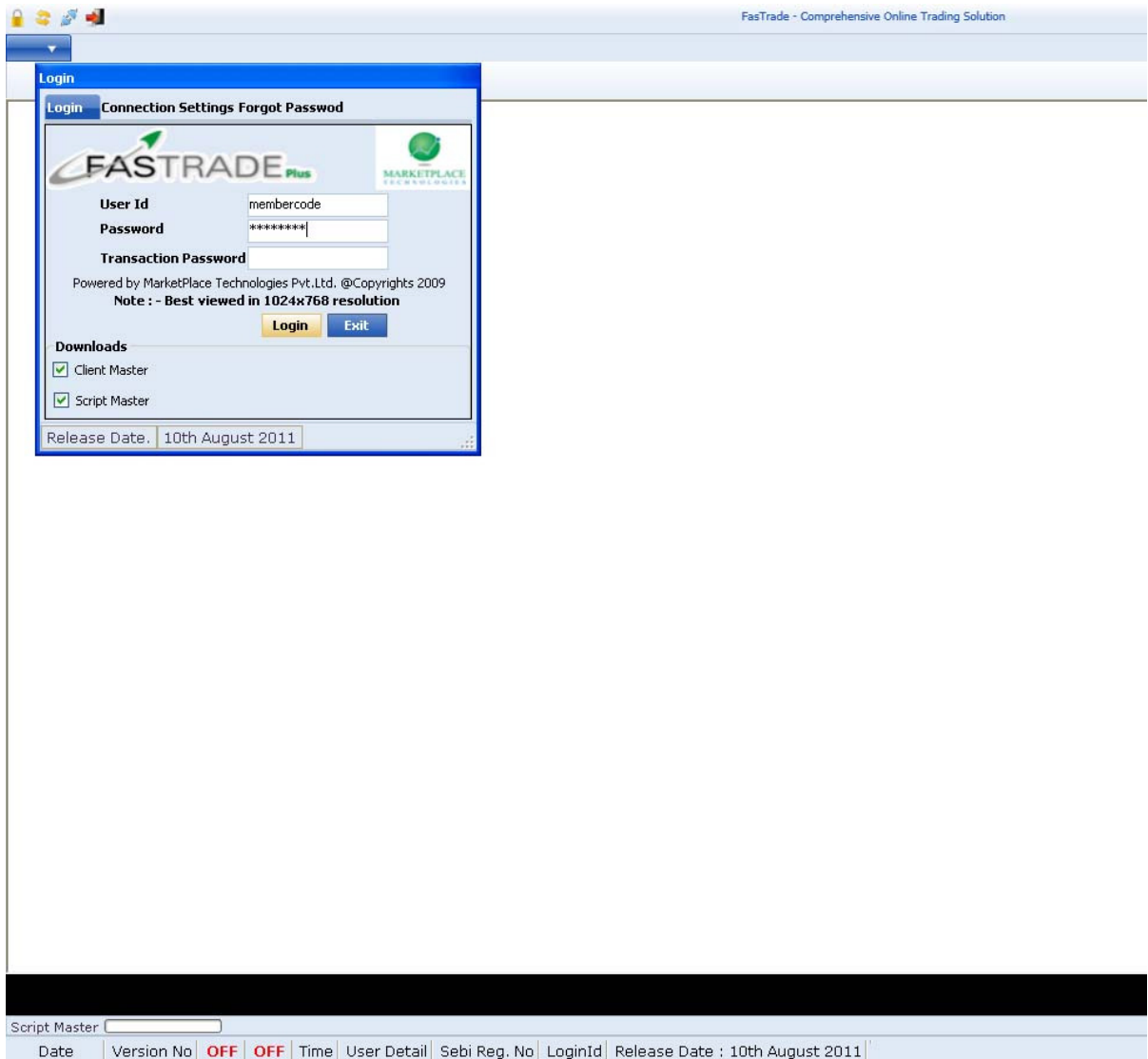
Browse for the file and select the same directory from where you have install the FastradePlus software. The directory (Fastrade 64bit New Version Setup) should be on the desktop itself and after choosing the directory select the 'Application.license' file and click OK. Then the installation will be complete.

Step 5:

As the installation is complete, run the FastradePlus software from the desktop icon



At the time of very first logon, when it ask for **Login** credentials like:



It will ask for FasTrade Member code / Client code and its respective password.

Provide that credentials and click on the two downloads like Client Master and Scrip Master and then logon. For the first time Logon the default password is 123456. After the first successful Logon it will ask for compulsory change in password and please provide your own secret password for future use.

After successful Logon please exit the application once and re logon with click on Download Masters again. Then move forward.

If there is any problem with downloading of the Scrip master and Client Master files form the ftp site, then exit the application.

Then copy the Scrip Master files (.zip and .db) from ftp server (<ftp://130.10.20.1>) with the credentials as given earlier.

Copy those files in the directory where Fastrade.exe resides (right click on the FasTradePlus icon on the desktop and click on properties and click Find Target option to get the desired directory/location).

Then finally re run the FastradePlus application form the desktop icon.

After successful logon for the first time, the screen will show blank Market-watch, as there is no scrip selected for the Market-watch. You have to select some Scrips for it through F12 hotkey. Select exchange, segment, scrip name etc and then add to the Market-watch. After that. you can use F4 hotkey to add Scrips more easily one by one without closing the scrip addition box from Market-watch window.

Save the market watch with a name and make it the default Market-watch to be opened at every time you logon successfully.

For password related issues please contact Asis Maity on 9836900216.

Mind you, this is under testing and once we finalise the adoption of this version as the main trading release for all the CSE Members, we will change certain parameters like IP addresses, Ftp etc. and you will have to change the parameters accordingly.

Please extend your valuable feedback to make the software error free and easy to operate at:

samikbhaduri@cse-india.com
asismaity@cse-india.com

or call CSE Helpdesk for FasTrade at: 033-2210-2204